

PRELIMINARY ISSUE
THIS PLAN ISSUED FOR
ADVANCE INFORMATION ONLY

NAD 83
CENTERLINE ANGLE POINTS
HUMBOLDT BAY
(BAR & ENTRANCE)

Δ PT	X	Y
C1	5936273.49	2172157.43
C2	5938147.59	2171508.43
C3	5943265.09	2170773.43
C4	5943553.39	2166602.43
C5	5944545.29	2166122.43
C6	5945375.99	2165957.43
C7	5946085.69	2165728.23
C8	5946685.99	2167508.39
C9	5947168.09	2168359.43
C10	5948049.99	2169917.43
C11	5948433.89	2170455.43
C12	5949233.79	2171119.43
C13	5950417.39	2171891.43
C14	5951329.29	2172565.43
C15	5952138.39	2173530.43
C16	5952998.89	2174706.43
C17	5953671.89	2180451.43
C18	5956236.79	2183159.43
C19	5957823.09	2186979.43
C20	5958152.59	2187513.43
C21	5958681.79	2188778.43
C22	5959261.79	2189878.43
C23	5959581.79	2189078.43

NAD 83
CHANNEL ANGLE POINTS
HUMBOLDT BAY (BAR & ENTRANCE)

Δ PT	X	Y	Δ PT	X	Y
1	5936596.69	2173163.63	24	5959081.79	2187578.43
2	5938385.39	2172268.83	25	5958421.69	2187381.23
3	5940404.09	2171258.93	26	5958007.99	2186903.83
4	5943666.09	2169944.43	27	5958425.39	2183393.63
5	5944727.49	2168468.93	28	5956165.59	2181942.63
6	5945239.99	2166690.33	29	5956348.69	2181424.83
7	5945752.39	2163911.73	30	5955866.99	2180383.43
8	5946464.09	2161731.33	31	5953163.09	2174504.63
9	5946953.59	2168479.53	32	5952300.39	2173413.63
10	5947831.59	2170042.13	33	5951516.79	2172459.53
11	5948193.09	2170979.33	34	5950526.69	2171724.13
12	5949124.59	2171297.03	35	5949343.09	2170862.93
13	5950308.09	2172059.13	36	5948674.79	2170232.13
14	5951141.79	2172853.23	37	5948301.49	2169794.33
15	5951976.39	2173546.23	38	5947988.59	2169234.23
16	5952816.79	2174808.43	39	5946907.49	2167381.23
17	5953484.79	2180520.43	40	5946431.39	2166537.23
18	5956347.79	2183225.33	41	5945672.89	2165192.43
19	5957638.19	2187056.43	42	5945354.09	2165254.63
20	5957883.59	2187647.53	43	5944363.09	2165776.33
21	5958881.79	2188978.43	44	5943441.39	2165261.63
22	5959581.79	2189078.43	45	5942126.19	2170287.93
23	5959681.79	2188378.43	46	5937908.79	2170746.43
			47	5935950.29	2171151.43

US Army Corps of Engineers
San Francisco District
450 Golden Gate Ave
San Francisco, CA 94102

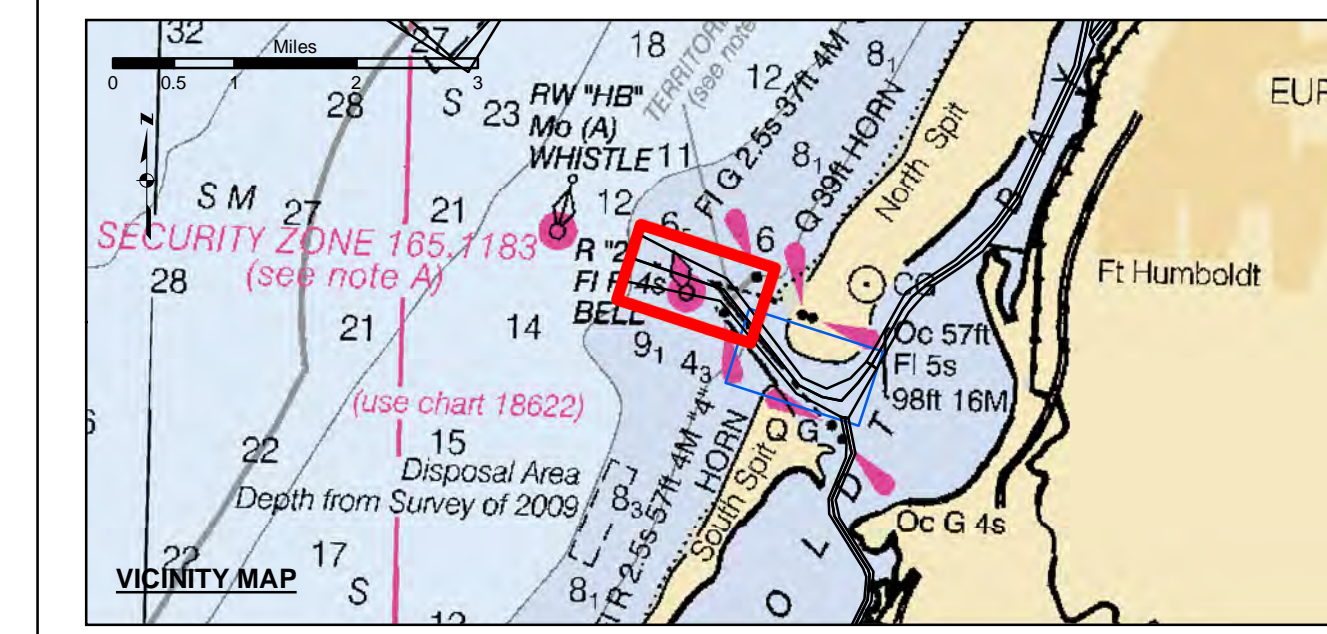
DISCLAIMER
The United States Government furnishes this information as a service to the public and does not warrant, express or implied, the accuracy, completeness, or reliability of the data. The user is responsible for the results of any application of the data for other than its intended purpose. The user is responsible for the results of any application of the data for other than its intended purpose. These data belong to the Government. Therefore the user is responsible for the results of any application of the data for other than its intended purpose. The user is responsible for the results of any application of the data for other than its intended purpose. The user is responsible for the results of any application of the data for other than its intended purpose.

PREPARED UNDER THE DIRECTION OF
LT COLONEL C.E. DISTRICT ENGINEER

Surveyed By:	Chart Date:
KEVIN P. ARNETT	Jun 06, 2023
Plotted By:	Designed by:
PDT	PDT
Checked By:	Drawn by:
PDT	PDT

CALIFORNIA
HUMBOLDT COUNTY
HUMBOLDT BAY
BAR & ENTRANCE CHANNEL
PROGRESS SURVEY
17 MAY 2023

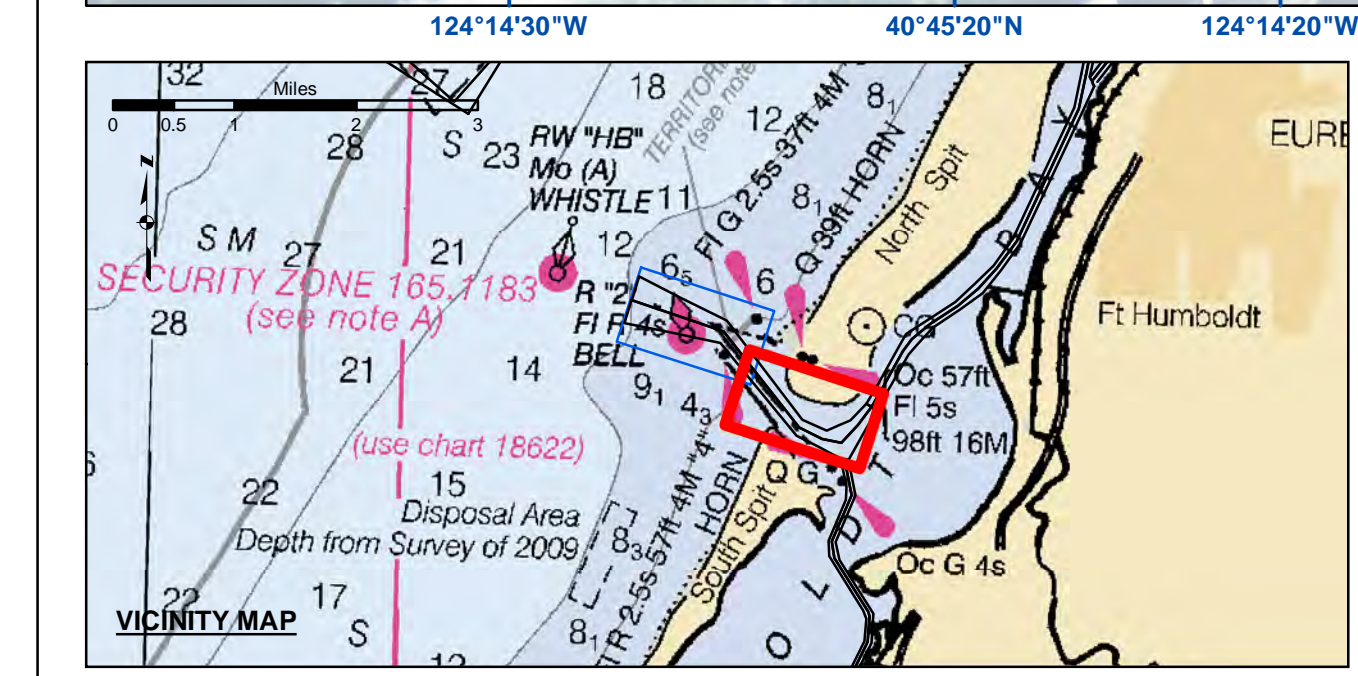
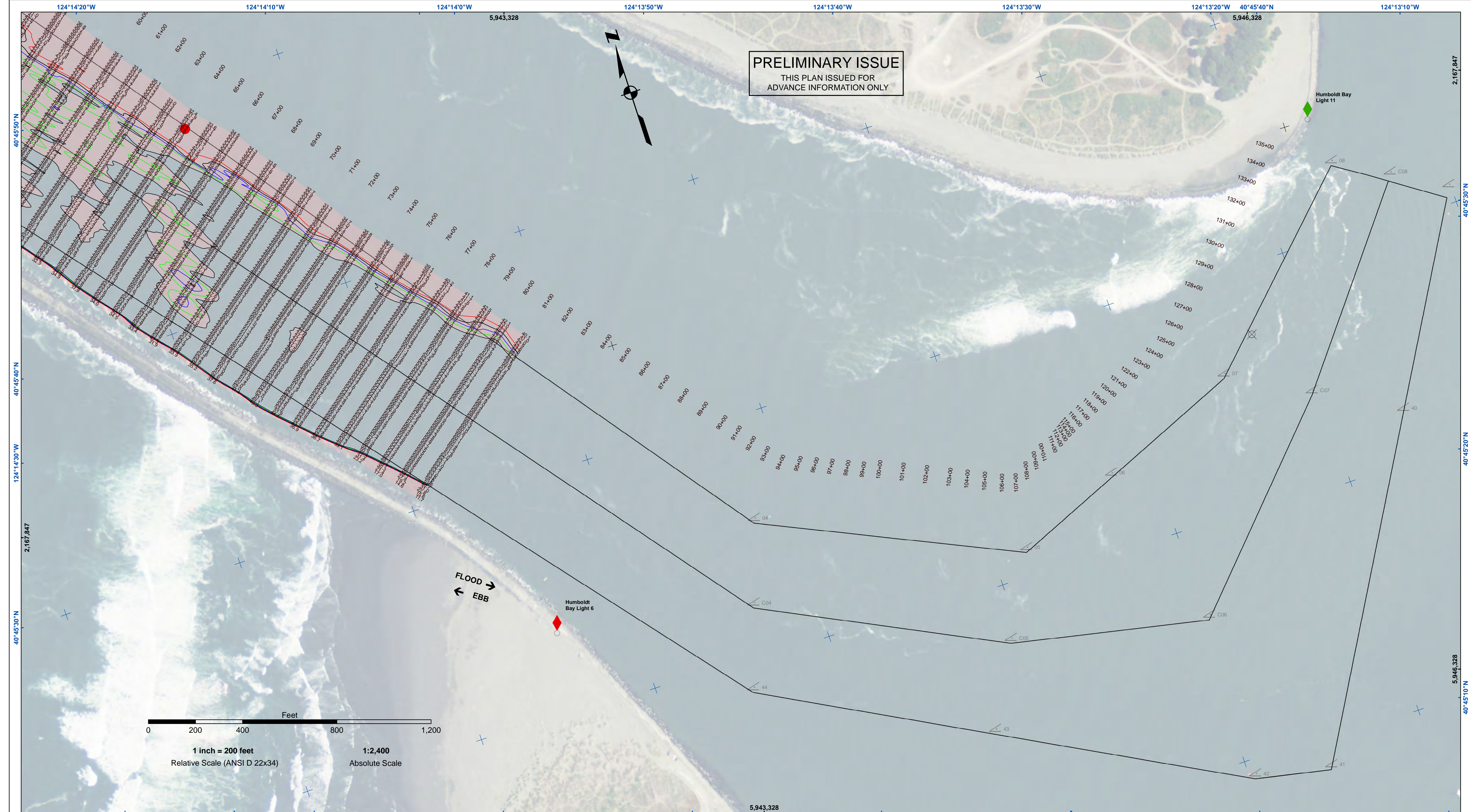
Sheet
Number
1 of 2



Federal Navigation Channel	Beacon, General	Contours
Shoaling Area	Obstruction Point	-48
Placement Area	Navigation Buoy	-47
Anchorage Area	Navigation Buoy	-46
Wreck Area	Shoalest Sounding*	-45
Submerged Wreck		-44
Zone_I_Angle_Points		

NOTES:
DRAWINGS NOT TO BE USED AS NAVIGATION. ONLY CHANNEL CONDITION AT DATE OF SURVEY. THE LOCATION OF ALL NAVIGATION AIDS ARE BASED ON INFORMATION PROVIDED BY THE U.S. COAST GUARD. BUOY LOCATION REPRESENT TO THE NEAREST TENTH FOOT.
SURVEYED BY THE CORPS OF ENGINEERS.
SOUNDING FOR THE CHANNEL MEASURED WITH MULTIBEAM ECHOSOUNDER AND ARE SHOWN TO THE NEAREST TENTH FOOT.
SOUNDINGS ARE BASED ON THE DATUM OF MEAN LOWER LOW WATER AT THE LOCALITY.
PLANE GRID AND COORDINATES ARE BASED ON THE STATE OF CALIFORNIA COORDINATE SYSTEM, LAMBERT CONFORMAL PROJECTION, ZONE 1 NAD 83, CALIFORNIA, AS DESCRIBED IN SPECIAL PUBLICATION NO. 235, PUBLISHED BY THE NATIONAL OCEAN SURVEY.
PROJECT DEPTHS ARE AS FOLLOWS:
BAR & ENTRANCE CHANNEL = 46 FEET
NORTH BAY, SALMON TO MILE 5.0 & = 38 FEET
EUREKA CHANNEL, FIELDS LANDING CHANNEL & MILE 5.0 TO 'N' STREET = 26 FEET

1:00 INDICATES THE NUMBER AND BEGINNING OF A LINE OF SOUNDINGS.
SOUNDINGS ARE BASED ON TIDE GAUGES REFERENCED TO U.S.C. & G.S.
Vertical and Horizontal Control:
NOAA Station: 941 8767 - North Spit, CA
Benchmark:
NO 11 1940 (PID: LV0359)
MLW Elev: 4.251m
Tides:
RTK GPS, using GEOID12a and VDATUM
RTK elevations calibrated at 10.0ft nail at Coast Guard Station Humboldt Bay
Position:
RTK Positions



- Federal Navigation Channel
- Shoaling Area
- Placement Area
- Anchorage Area
- Wreck Area
- Submerged Wreck
- Zone_I_Angle_Points
- Beacon, General
- Obstruction Point
- Navigation Buoy
- Navigation Buoy
- Shoalest Sounding*
- Contours**
- 48
- 47
- 46
- 45
- 44

NOTES:
DRAWINGS NOT TO BE USED AS NAVIGATION. ONLY CHANNEL CONDITION AT DATE OF SURVEY. THE LOCATION OF ALL NAVIGATION AIDS ARE BASED ON INFORMATION PROVIDED BY THE U.S. COAST GUARD. BUOY LOCATION REPRESENT TO THE NEAREST TENTH ONLY.
SURVEYED BY THE CORPS OF ENGINEERS.
SOUNDING FOR THE CHANNEL MEASURED WITH MULTIBEAM ECHOSOUNDER AND ARE SHOWN TO THE NEAREST TENTH FOOT.
SOUNDINGS ARE BASED ON THE DATUM OF MEAN LOWER LOW WATER AT THE LOCALITY.
PLANE GRID AND COORDINATES ARE BASED ON THE STATE OF CALIFORNIA COORDINATE SYSTEM, LAMBERT CONFORMAL PROJECTION, ZONE 1 NAD 83, CALIFORNIA, AS DESCRIBED IN SPECIAL PUBLICATION NO. 235, PUBLISHED BY THE NATIONAL OCEAN SURVEY.
PROJECT DEPTHS ARE AS FOLLOWS:
BAR & ENTRANCE CHANNEL = 46 FEET
NORTH BAY, SAMO'S TO MILE 5.0 & = 38 FEET
EUREKA CHANNEL, FIELDS LANDING CHANNEL & MILE 5.0 TO "N" STREET = 26 FEET

1:00 INDICATES THE NUMBER AND BEGINNING OF A LINE OF SOUNDINGS.
SOUNDINGS ARE BASED ON TIDE GAUGES REFERENCED TO U.S.C. & G.S.
Vertical and Horizontal Control:
NOAA Station: 941 8767 - North Spit, CA
Benchmark:
NO 11 1940 (PID: LV0359)
MLLW Elev: 4.251m
Tides:
RTK GPS, using GEOID12a and VDATUM
RTK elevations calibrated at 10.0ft nail at Coast Guard Station Humboldt Bay
Position:
RTK Positions

US Army Corps of Engineers
San Francisco District
450 Golden Gate Ave
San Francisco, CA 94102

DISCLAIMER
The United States Government furnishes this information as a service to the public and does not warrant, express or implied, the accuracy, completeness, or reliability of the information. The user is responsible for the results of any application of the data for other than its intended purpose. The user is responsible for the results of any application of the data for other than its intended purpose. The user is responsible for the results of any application of the data for other than its intended purpose. The user is responsible for the results of any application of the data for other than its intended purpose.

PREPARED UNDER THE DIRECTION OF LT COLONEL C.E. DISTRICT ENGINEER Submittal: Hydro Survey Team Leader Recommendation: Chief, Hydro Survey Section Approved: Chief, Construction Branch	Surveyed By: _____ Plotted By: PDT Checked By: PDT	Chart Date: Jun 06, 2023 Designed by: _____ Drawn by: PDT
---	--	---

CALIFORNIA
HUMBOLDT COUNTY
**HUMBOLDT BAY
BAR & ENTRANCE CHANNEL
PROGRESS SURVEY**
17 MAY 2023

**Sheet
Reference
Number**
2 of 2